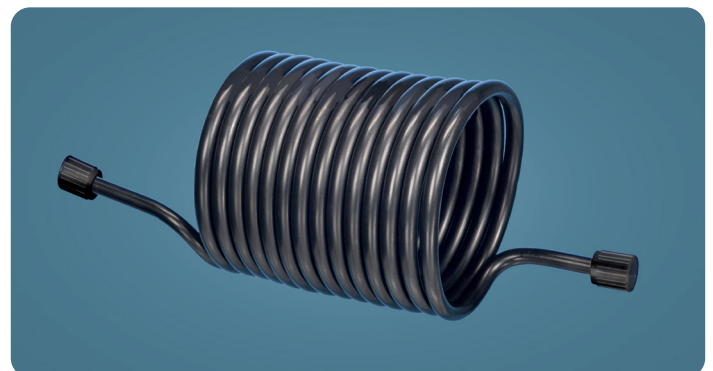
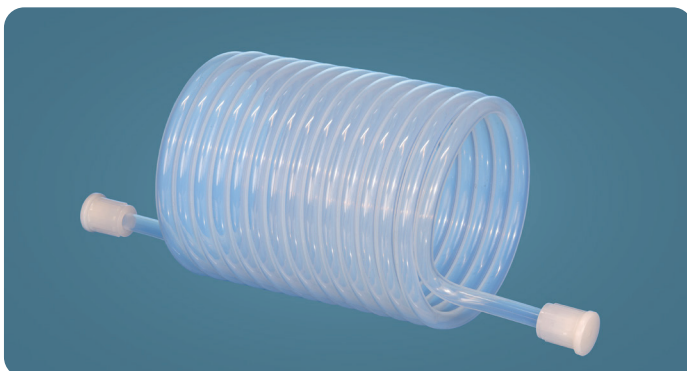
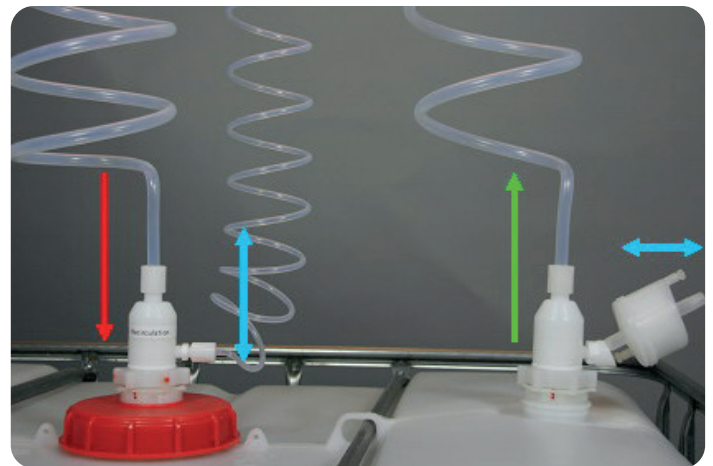


For stress-free installation of the QC-System®

ADVANTAGES

- Easily returns to the original coiled starting position
- Nominal sizes: 1/4", 3/8", 1/2" and 3/4"
- Almost universal chemical resistance
- Flare connections at both tubing ends
- High purity PFA material
- At least 4cm of straight tubing on both ends so that the QC dispense/recirculation head can be connected via Flare connection system with ease.
- Also available with antistatic outer layer

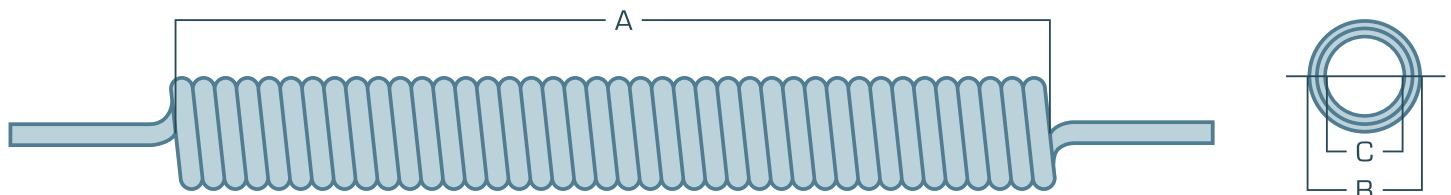


Convuluted Tubing made from PFA ACCESSORY

STANDARD VERSION

Material	Size in inches	Usable length in meters	Turning dimensions in mm/inch			Dimensions tubing in mm/inch		Item no.	Item no. CD
			A	B	C	ID	OD		
PFA virgin	1/4"	1.5	115/4.53	80/3.15	65/2.56	4/5/32"	6.4/1/4"	PFAW-06	
	3/8"	2.4	165/6.50	130/5.12	110/4.33	6.4/1/4"	9.5/3/8"	PFAW-09	
	1/2"	2.2	210/8.27	160/6.30	135/5.31	9.4/3/8"	12.6/1/2"	PFAW-12	
	3/4"	3	290/11.42	210/8.27	165/6.50	15.7/5/8"	19.1/3/4"	PFAW-19	
PFA antistatic (outer layer) PFA virgin (inner layer)	1/2"	1.1	105/4.13	165/6.50	135/5.31	9.4/3/8"	12.6/1/2"		PFAW-12CD
	1/2"	2.2	210/8.27	165/6.50	135/5.31	9.4/3/8"	12.6/1/2"		PFAW-1222CD
	3/4"	1.5	145/5.71	215/8.46	180/7.09	15.7/5/8"	19.1/3/4"		PFAW-19CD
	3/4"	3	290/11.42	215/8.46	180/7.09	15.7/5/8"	19.1/3/4"		PFAW-1930CD

*Also available in half-length



Over 1000 dip tubes.

For every container and virtually any length. Over 1000 standard variants. Optional bellows-type length compensator for virtually complete emptying. In addition, the dip tubes can be pre-installed in the containers by the chemical supplier or the container manufacturer. Safe, simple and clean.



SIMPLY CONFIGURE ONLINE!

Create your individual AS dispense heads with just a few clicks.



www.mydispensehead.com

Convolved Tubing made from PFA

6 good reasons for the QC-System®:

- Clean delivery with preinstalled dip tube
- Fast connection with easy to use key code system that prevents chemical mix-ups
- Emission-free dispensing with integrated ventilation
- Drip-free disconnection
- High purity and chemically resistant materials
- Worldwide in use, well-known references



Chemical consumers from a wide range of industries already rely on the AS QC System® worldwide

Electronics Semiconductors
Solar technology and photovoltaics
Flat screens

Industry Electroplating
Chemicals
Printing/Paper
Water treatment
Automotive / mechanical engineering
Adhesives
Glass
Agriculture

Pharmacy / Biotechnology / Cosmetics / Foods

Laboratories / Research facilities / Institutes

EUROPE – WORLDWIDE

AS Strömungstechnik GmbH

Elly-Beinhorn-Str. 7
73760 Ostfildern, Germany

Tel.: +49 (0) 711 220 548-0
Fax: +49 (0) 711 220 548-29

info@asstroemungstechnik.de
www.asstroemungstechnik.de

USA

A.S. Plastics Technology, Inc.

644 Shrewsbury Commons
Avenue #246
Shrewsbury, PA 17361 USA

Tel.: +1 (979) 232-2288

sales@as-plastech.com
www.as-plastech.com

ASIA – PACIFIC

DUSEMUND PTE LTD
Dr. Claus Dusemund

25 International Business Park
#04 – 62 German Centre
Singapore 609916

Tel.: +65 6562 7871
Fax: +65 6562 7872

claus@dusemund.com
www.dusemund.com



QC® - an AS Strömungstechnik GmbH system. Made in Germany.
www.asstroemungstechnik.de