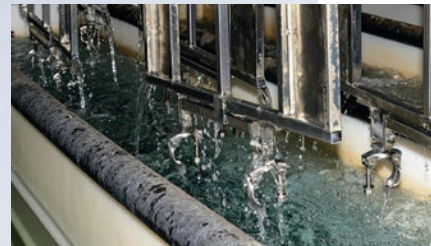


Your upgrade for increased safety and cleanliness.  
Dispense chemicals more safely and  
more efficiently.

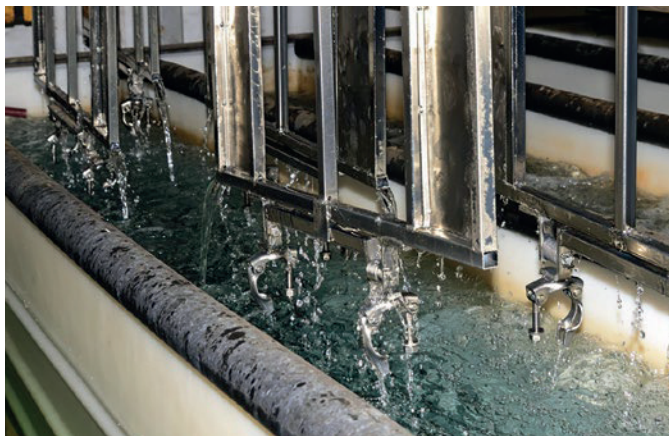


30 years of experience in  
various chemical process  
industries

# The clever, complete system for chemical process industries. For better protection and more efficient processes.

The handling of corrosive and aggressive chemicals is a critical part of many production steps in chemical process industries. Therefore, it is necessary to ensure the full protection of operators and the environment from these chemicals – from the first process step onwards.

This first process step is often the challenge, to get the chemicals out of their transport containers into the process or a storage tank. Common dispensing methods often involve open containers and bulky equipment. This leads to outgassing and spills that could potentially harm the operators and surrounding equipment. To solve this challenge, we developed the AS QC-System which enables you to dispense your chemical out of drums, totes or canisters emission-free in a closed loop. Connecting and disconnecting to the containers is spill-free and even mix-ups between different chemicals are prevented.



## High-quality plastics. No metal parts. 100,000 variants.

The right solution for every application – for dispensing and filling with just one head and a dip tube (QC3) just like in the classic variant (QC2) which has been tried and tested a thousand times over – always protected by a key-code and spill-free.

Smart:  
with RFID-CHIP!

Chemicals mixed up?  
Container lifetime  
expired? Forget it!

The first i4.0 solution  
for container handling:

**SUPPLY**®  
**LINE**»  
connect. control. perform.



[www.supplyline.as](http://www.supplyline.as)



The safety requirements for handling corrosive and aggressive chemicals are continuously increasing. This is precisely why the AS QC-System is constantly being enhanced and improved—with ideas that are difficult to find elsewhere. This ensures that you can obtain your chemicals in the safest way possible and efficiently transport them from A to B. Since the first link in any process can often be the most crucial, a clever dispensing system allows you to achieve the highest level of process reliability.

### ■ Dispense heads with limit switches

The AS dispense heads – including those featuring limit switches directly on the head or in the shut-off valve – are available for signalling with a secure connection.

**Benefit:**

- No spillage caused by incorrect or incomplete mounting
- No electrical components touching the product



Signalling with full connection  
to dip tube

Signalling with **shut-off valve**  
in proper position

## For increased efficiency:

With sophisticated solutions down to the intricate details of the sensor

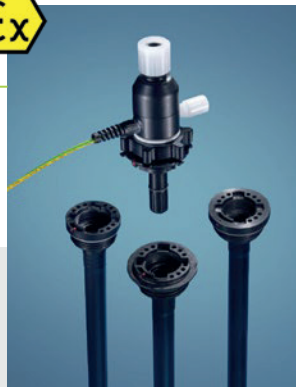
With QC from AS, you can improve your processes and make them more efficient in the long-term. Bit by bit, variant by variant. For example, the solutions illustrated here have been developed for you based on decades of experience in chemical processes of various industries.

### ■ Safe in hazardous areas

Conductive versions for potentially explosive environments.

#### Benefit:

- Manufactured entirely from plastic, no metal parts



### ■ Faster with high-flow version

The G-series dispenses a 1000-litre IBC in just 10 minutes, for example.

#### Benefit:

- Highly efficient dispensing and filling with flow rates of up to 150 l/min



### ■ Efficient mixing of slurries

Special recirculation heads with mixing nozzles make mixing easier.

#### Benefit:

- Optimum mixing results in the shortest time possible
- No additional mechanical stirrers required
- No moving parts – no generation of particles

Also perfect for limewater!

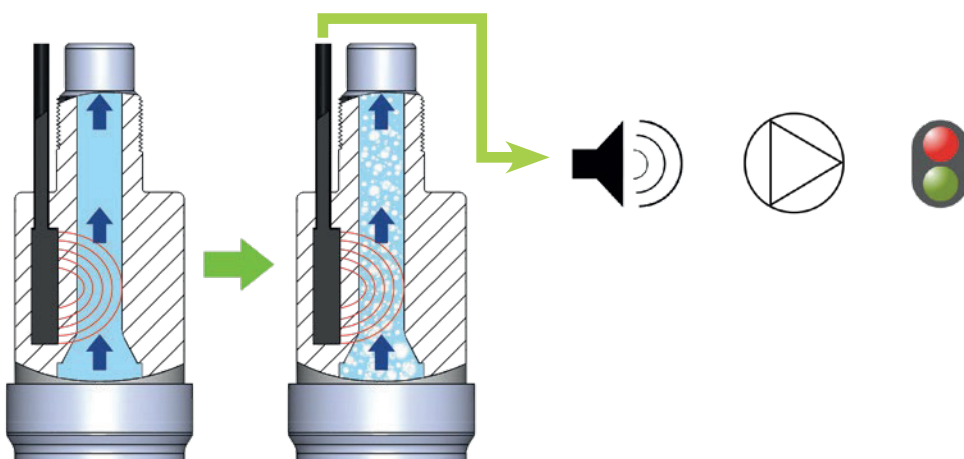


### ■ Report empty status easily – fully automatically

Dispense heads with integrated bubble sensor enable automatic operation.

#### Benefit:

- Signalling when the container is completely emptied
- Enables, for example, actuation of the pump, switching between two containers and control of lights or signal horns





## For maximum flexibility: For every application, for every special case

You can now choose from over 100,000 variants, whereby some are developed in accordance with customer specifications. If you cannot find the right solution, we will make it for you.

### ■ Customised combinations

Combine individually with the modular system within the QC2, QC3 or G-series: Materials, hose connections, valve variants, ventilation types and O-rings. Plus various additional options.



Configure online!

#### High-quality plastics:

For example, PE, PVDF and PFA – also available in a conductive version for hazardous areas



#### Versatile valve types:

Self-closing check valves, pneumatic valves, manual ball valves, etc.



#### Various connections:

Flare, clamp, thread, hose connector, camlock, etc. (horizontal and vertical)



#### Various ventilation systems:

Via check valves, particle filters or highly flexible tubing.

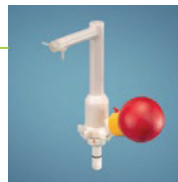


O-rings: Kalrez®  
FKM, EPDM

### ■ Use additional options

Use the numerous additional options such as limit switches, mixing nozzles, pumps, etc. for customised solutions.

Our Technical Sales team will be happy to help you.



Dispense heads with manual hand or foot pumps



Small versions when only low flow rates are required



Integrated compressed air-operated diaphragm pumps



Fill head with injector for N<sub>2</sub> blanketing

### ■ Complete emptying

Customised AS QC dip tubes with bellows.

#### Benefit:

- Best possible complete drainage (see table)
- Adapted to various lengths and threads, they ensure virtually complete drainage even from large containers



#### Example remaining quantities:

Schütz MX1000 IBC	up to 1.8 l
Varibox 1000 FC IBC	up to 0.7 l
Werit IBC	up to 2.0 l
Rikutec IBC	up to 2.5 l
Müller combi drum	up to 0.6 l
Mauser drum	up to 0.7 l

### ■ Suitable for all containers

For 5 to 1000 litre container and packaging systems.

#### Benefit:

- QC is the right solution for IBC, pure plastic drums or metal/plastic combination drums, for every connecting thread (metric or butress thread), for dome covers or for IBC top ends. And it can empty every format more efficiently than you've ever seen before.





QC from AS – a complete system with  
over 100,000 options.  
Used by leading companies around the world.



The AS QC-System supplies chemical consumers from a wide range of industry sectors:

- |             |  |
|-------------|--|
| Electronics | Semiconductors<br>Solar power & photovoltaics<br>Flat-screen displays  |
| Industry    | Electroplating<br>Chemistry<br>Printing / Paper<br>Water treatment<br>Automotive / Mechanical engineering<br>Adhesives<br>Glass<br>Agriculture |

Pharmaceuticals / Biotechnology / Cosmetics / Foodstuffs

Laboratories / Research institutes / Institutes

QC – an AS Strömungstechnik GmbH system. Made in Germany.  
[www.asstroemungstechnik.de](http://www.asstroemungstechnik.de)

## EUROPE – WORLDWIDE

AS Strömungstechnik GmbH  
Elly-Beinhorn-Str. 7  
73760 Ostfildern, Germany  
Tel.: +49 (0) 711 220 548-0  
Fax: +49 (0) 711 220 548-29  
[info@asstroemungstechnik.de](mailto:info@asstroemungstechnik.de)  
[www.asstroemungstechnik.de](http://www.asstroemungstechnik.de)

Agencies:

## USA

A.S. Plastics Technology, Inc.  
644 Shrewsbury Commons  
Avenue #246  
Shrewsbury, PA 17361 USA  
Tel.: +1 (979) 232-2288  
[sales@as-plastech.com](mailto:sales@as-plastech.com)  
[www.as-plastech.com](http://www.as-plastech.com)

## ASIA – PACIFIC

DUSEMUND PTE LTD  
Dr. Claus Dusemund  
25 International Business Park  
#04 – 62 German Centre  
Singapore 609916  
Tel.: +65 6562 7871  
Fax: +65 6562 7872  
[claus@dusemund.com](mailto:claus@dusemund.com)  
[www.dusemund.com](http://www.dusemund.com)

